

Section 3 – System and Organizational Structure

3.1 WMU Wastewater System

Currently, WMU provides wastewater service to 11,533 residential, commercial, institutional, and industrial customers. The WMU wastewater treatment and collection system is comprised of the following.

- 137.7 miles of gravity sewer
- 9.8 miles of force main sewer
- 0.8 miles of private sewer (including private pump stations)
- 3,585 manholes
- 17 pump stations
- 1 wastewater treatment plant

WMU owns and maintains the collection system and appurtenances that transport the wastewater to the treatment plant. WMU Policies 203.1, 402.2, and 408.1, (Appendix B), establishes points of ownership and maintenance for the utility and the customer. In general, WMU owns and maintains the sanitary sewer system to the right-of-way or easement limit. Typically, a cleanout is located at the right-of-way or easement limit to establish the point of responsibility. A private sanitary sewer line is defined in WMU Policy 408.1 and maintained per WMU Policy 203.1 (Appendix B). In the event a problem occurs on a private sanitary sewer and repair or maintenance is required to protect the public health, safety, and welfare of the general public, work **may** be initiated by WMU to alleviate, eliminate, or mitigate the problem.

3.2 WMU Organizational Structure

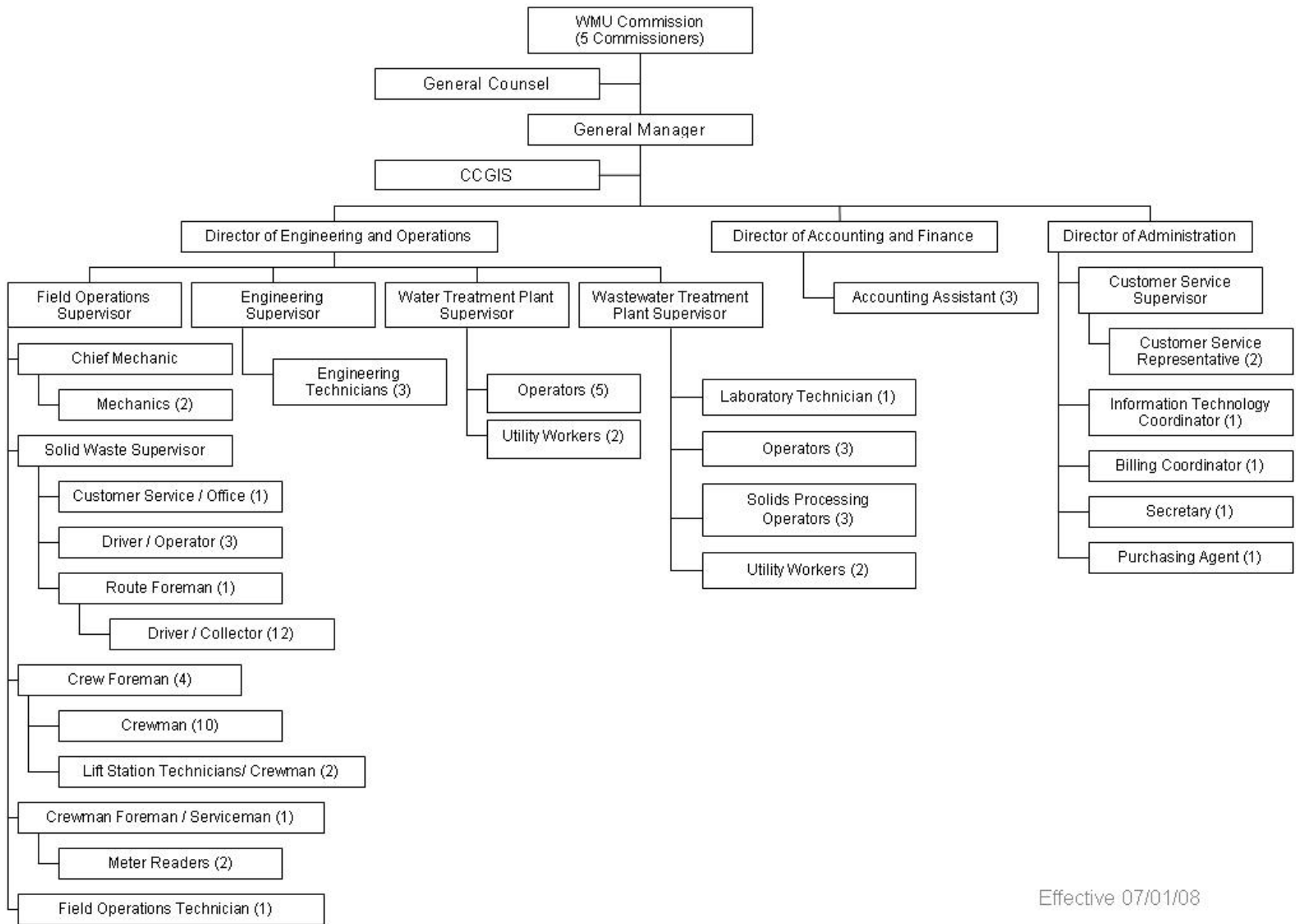
A copy of WMU's overall organizational structure is shown in Figure 3-1.

3.3 Responsibilities

- **WMU Commission** – Oversees the development and adoption of policies governing the acquisition of wastewater systems.
- **General Manager** – Responsible for overall acquisition process and policy compliance. Oversight includes regulatory compliance and ensuring the financial and physical capacity of the existing system to integrate acquired waste streams.
- **Director of Operations/Engineering** – Serves as the Program Manager. Ensures implementation of the Acquisition Consideration Program with respect to manpower, coordination, and engineering functions.
- **Field Operations Supervisor** – Responsible for allocating weekly manpower and equipment to operate the wastewater collection system.

- **Engineering Supervisor** – Responsible for providing engineering support needed to comply with the Acquisition Consideration Program.

FIGURE 3-1
WMU ORGANIZATIONAL CHART



Effective 07/01/08