

PLOTTED
Jun. 2021 by RLL

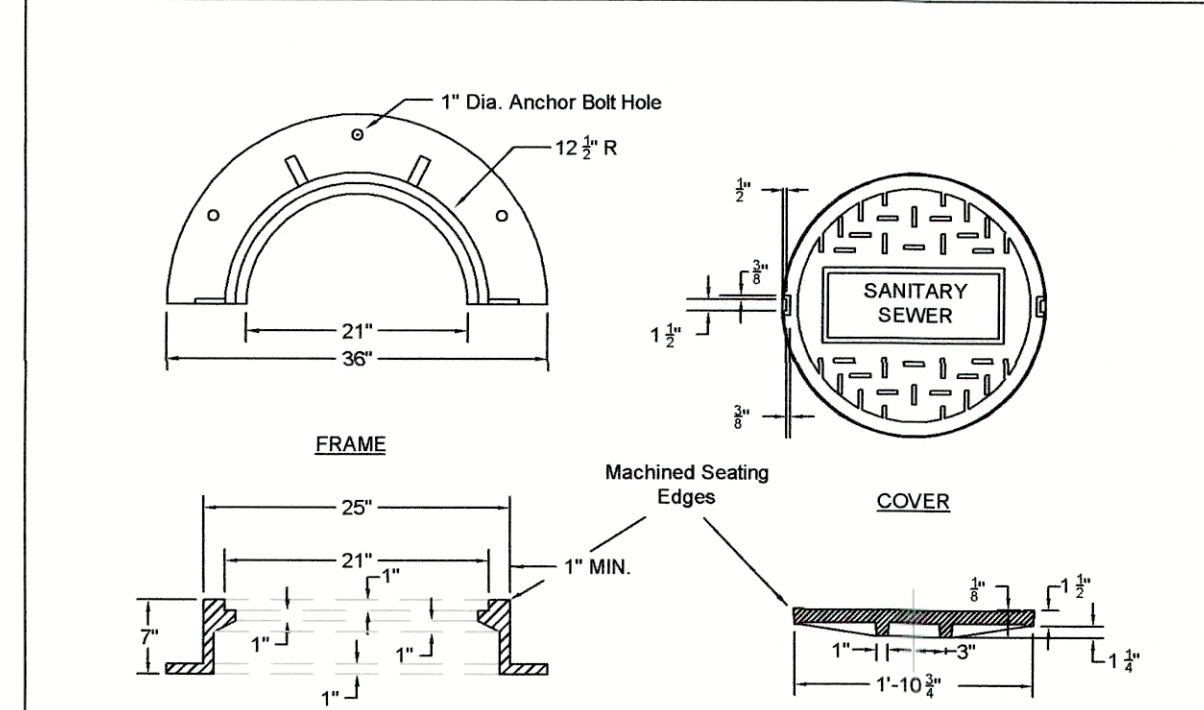
Scale: 1" = XX	Date: MM/YYYY
Drawn By: XXX	Checked By: XXX
Proj. Name: XXX	Proj. No.: XXX

SHEET
1 OF 2

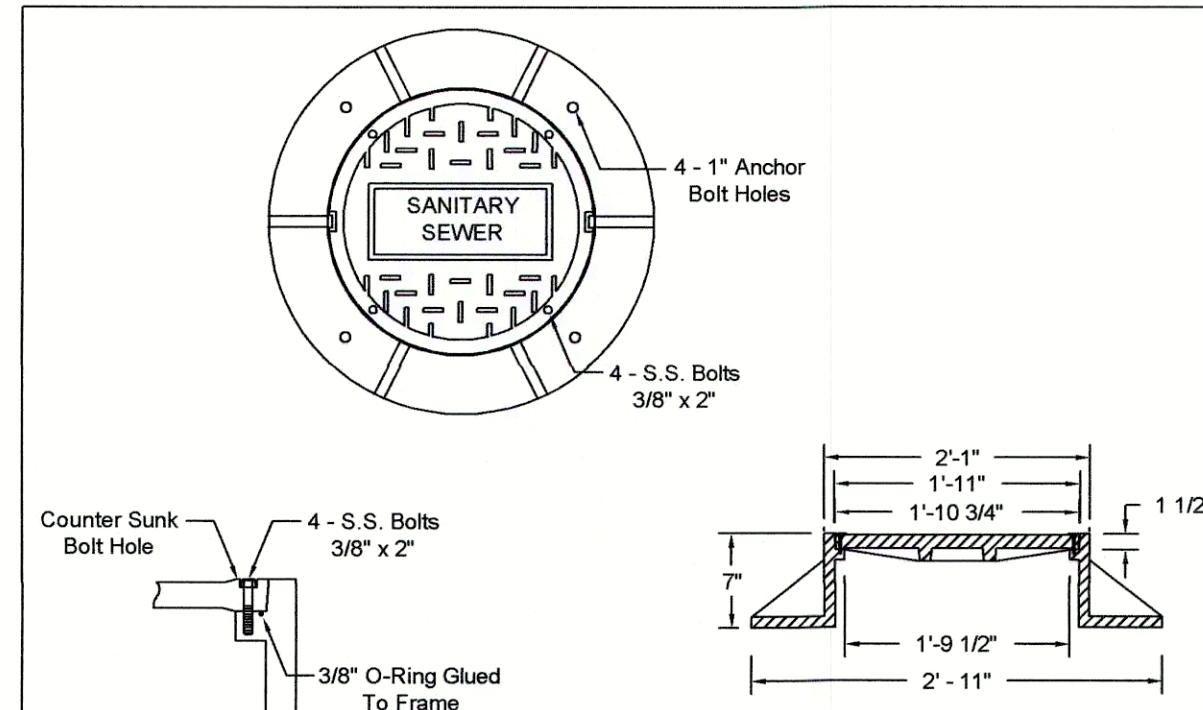
- 24 HOUR NOTICE IS REQUIRED PRIOR TO STARTING CONSTRUCTION.
- ALL THROUGH MANHOLES SHALL BE APPROVED BY THE GRABER OF THE SEWER. IT IS THE RESPONSIBILITY OF THE OWNER TO PROVIDE THE SEWER. MANHOLES OVER 48" IN DIAMETER SHALL BE APPROVED BY THE GRABER OF THE SEWER. MANHOLES OVER 48" IN DIAMETER SHALL BE APPROVED BY THE GRABER OF THE SEWER. MANHOLES OVER 48" IN DIAMETER SHALL BE APPROVED BY THE GRABER OF THE SEWER.
- BOTTOM SECTION OF MANHOLE SHALL HAVE SLOPE FOR PIPES. PREPARED AT THE TIME OF CASTING. CUTTING OF SLOPE IN MANHOLE SHALL NOT BE PERMITTED UNLESS AUTHORIZED IN WRITING BY MAINTENANCE ENGINEER. IF THIS IS THE CASE, SECTION SHALL BE PERFORMED AND CAST IN PLACE.
- ALL FLOORS OF MANHOLES MUST HAVE A BRUSH FINISH.
- CONNECTIONS TO EXISTING MANHOLES WILL BE MADE ONLY AFTER SEWER LINE HAS BEEN FULLY COMPLETED. ALL CONNECTIONS SHALL BE MADE BY MAINTENANCE ENGINEER. ALL CONNECTIONS SHALL BE MADE BY MAINTENANCE ENGINEER.
- WHENEVER POSSIBLE, THE EXISTING CONE SHALL BE PLACED PERPENDICULAR TO THE LINE OF THE SEWER TO MINIMIZE FUTURE MISALIGNMENT DURING THE SEWER.
- CONCENTRIC CONE MANHOLES MAY BE USED IN LIEU OF ECCENTRIC CONE MANHOLES WHEN REQUESTED BY THE CONTRACTOR AND APPROVED BY MAINTENANCE ENGINEER OF SHOWN DRAWINGS. THE CONSTRUCTION TO BE USED.
- ALL SEWERS SHALL BE MARKED BY USING DETECTABLE METAL REINER LINE (TYP. APPROVED BY MAINT. 1" MAX. OF 1" BELOW FINAL GRADE).
- MANHOLES SHALL BE LOCATED AT ALL BENDS AND AT EVERY 300' (MAX. LENGTH).
- ALL UTILITY LINES IN MANHOLES OBSERVED DURING CONSTRUCTION ON INSPECTION SHALL BE CORRECTED EVEN THOUGH INSPECTION REQUIREMENTS HAVE ALREADY BEEN MET.
- UNLESS OTHERWISE INDICATED OR SPECIFIED, UNREINFORCED CONCRETE FOR MANHOLE RINGS SHALL BE CLASS 1500 PSI. ALL REINFORCING STEELS AND REINFORCED BASE AND TOP SLAB SHALL BE CLASS 4000 PSI. CONCRETE.
- SHALLOW MANHOLES SHALL BE CONSTRUCTED WITH 48" PRECAST CONCRETE RINGS WITH TOP SLAB AND MANHOLE COVER AS SHOWN IN SDS-10.
- MANHOLE CASTINGS SHALL CONSIST OF CAST IRON FRAME, 25" X 25" COVERS, INCLUDING LIDS AND 12" X 12" COVERS. THE FRAME SHALL BE CAST IN PLACE. CONCRETE SHALL BE 4000 PSI. ALL CAST IRON SHALL BE APPROVED EQUAL.
- A MINIMUM SEPARATION OF 18" IS REQUIRED AT ANY LOCATION WHERE A WATER LINE CROSSES A SANITARY LINE. IF THE SEWER LINE CAN NOT BE SEPARATED, THE WATER LINE SHALL BE INSTALLED IN SUCH A MANNER THAT IT DOES NOT INTERFERE WITH THE SEWER LINE AND A SEPARATION OF 18" MUST BE MAINTAINED.
- MANHOLE LINE TRENCHES IN EXISTING DRIVEWAYS OR STREETS SHALL BE BACKFILLED WITH 4000 PSI CONCRETE TO THE TOP OF THE TRENCH.
- SEWER LINE TRENCHES OUTSIDE DRIVEWAYS OR STREETS SHALL BE BACKFILLED WITH 4000 PSI CONCRETE TO THE TOP OF THE TRENCH. IF THE SEWER LINE IS IN A DRIVEWAY, THE TRENCH SHALL BE BACKFILLED WITH 4000 PSI CONCRETE TO THE TOP OF THE TRENCH.
- MANHOLE STEPS SHALL BE POLYPROPYLENE PLASTIC WITH 2" STEEL REINFORCING ROD GRADE 40. STEPS SHALL CONFORM TO ASTM A 661-01 OR 1008 AND ASTM A 661-01.
- NO BRICK PERMITTED IN MANHOLE WALLS OR ADJUSTMENT COLLARS.
- RUBBER WATER STOP SHALL BE REQUIRED FOR ALL PIPES ENTERING MANHOLE AND MUST BE GROUDED IN PLACE TO THE MANHOLE WALL. IF ADHESIVE OR GROUT IS USED, IT SHALL BE GROUDED IN PLACE TO THE MANHOLE WALL.
- PRECAST MANHOLE RINGS SHALL BE SEALED WITH GROUT OR ADHESIVE SEAL. IF ADHESIVE SEAL IS USED, IT SHALL BE GROUDED IN PLACE TO THE MANHOLE WALL.
- STEEL ENCASUREMENT PIPE SHALL BE PLACED AT THE LOCATION SHOWN ON THE PLAN IN ACCORDANCE WITH THE NOTES. THE LENGTH AND TYPE OF MATERIAL. THE ENCASUREMENT PIPE SHALL HAVE A MINIMUM WALL THICKNESS OF 1/2" FOR NEW CASTING PIPE OR 3/4" FOR GALVANIZED CASTING PIPE. FOR EXISTING PIPE INSTALLATION APPLICATIONS, THE STEEL CASTING PIPE SHALL CONFORM TO THE ABOVE SPECIFICATIONS EXCEPT THAT IT SHALL BE IN TWO (2) LENGTHS AND JOINTS JOINTED BY A CONTINUOUS WELD FROM END TO END TO THE OTHER WITHOUT ANY TRACEDABLE JOINT. THE ENCASUREMENT PIPE MUST BE STURDY ENOUGH TO WITHSTAND THE LOADS AND BE GROUDED IN PLACE TO THE OTHER WITHOUT ANY TRACEDABLE JOINT.



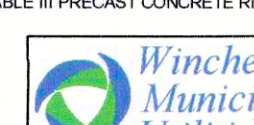
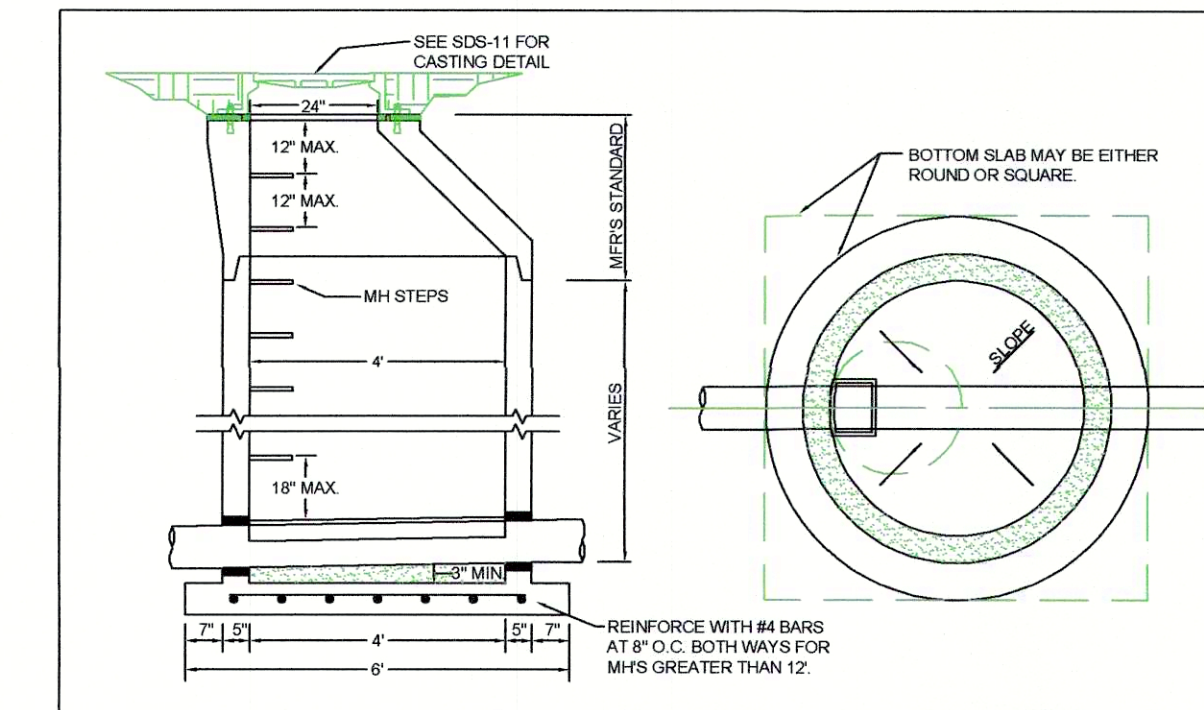
General Notes (Sewer)
Scale: 1" = 30'
Date: Jan. 04
Dwg. No.: SDS - 01



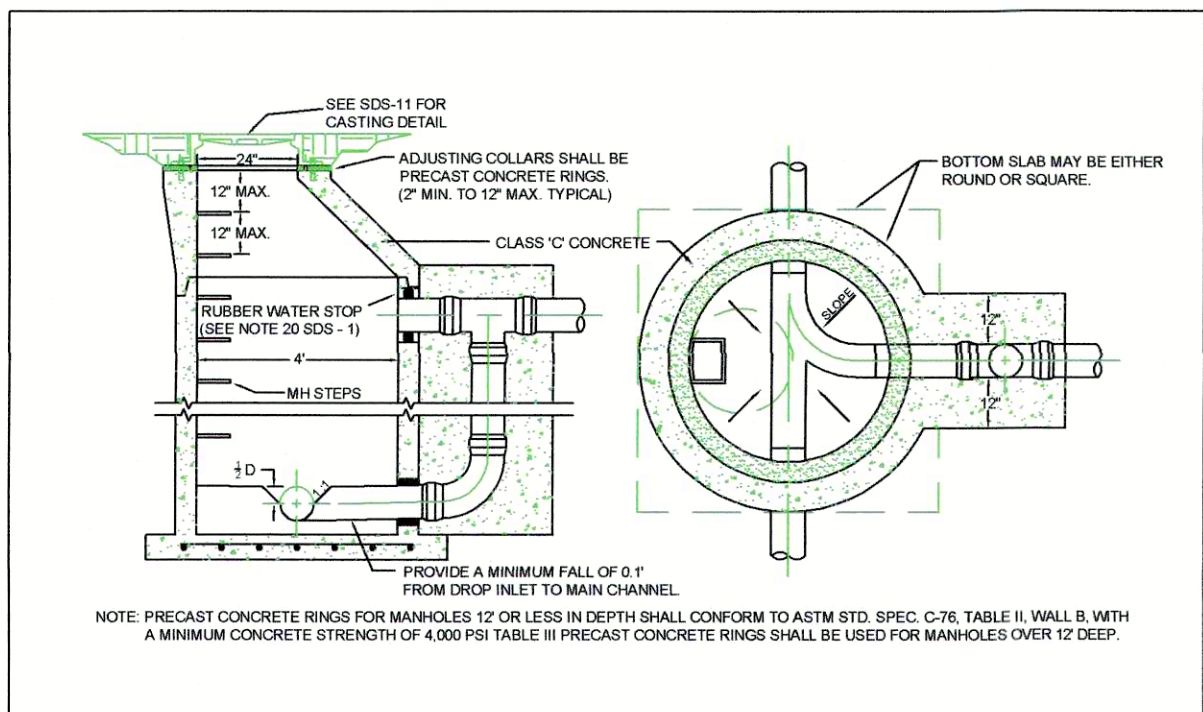
Manhole Frame and Cover
Min. Wt. 460 Lbs.
Scale: 1" = 12"
Date: Jan. 2004
Dwg. No.: SDS - 02



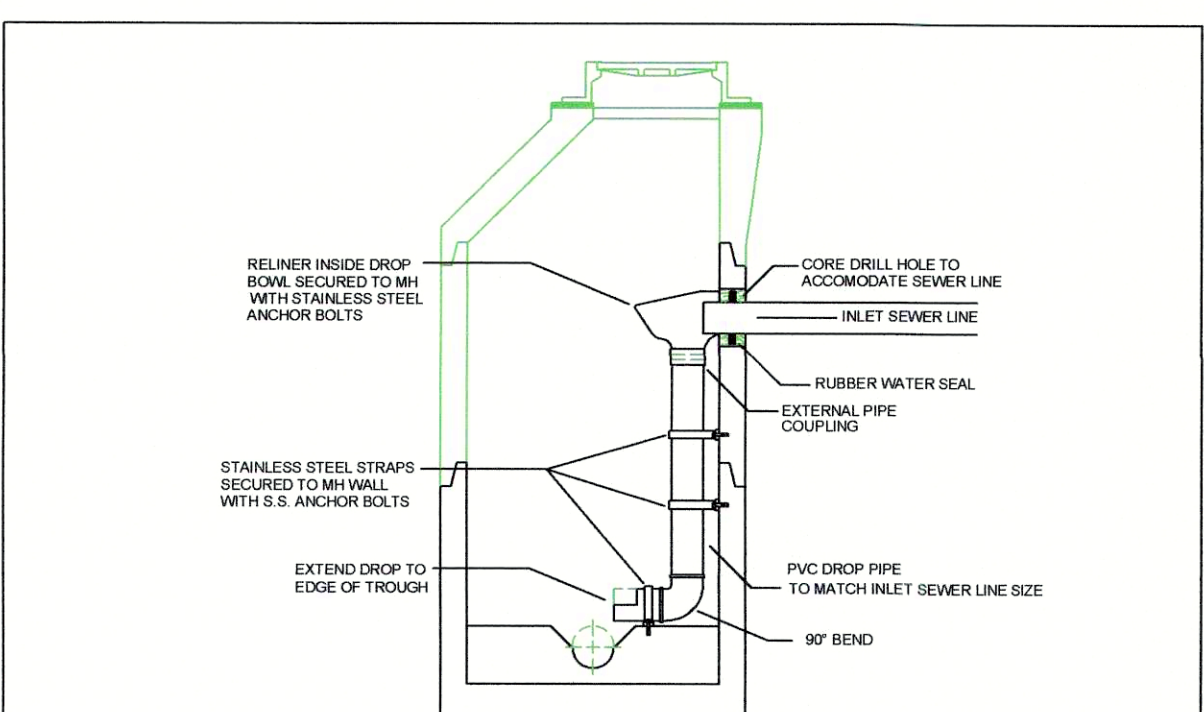
Bolt Down MH Frame & Cover
Scale: 1" = 12"
Date: Jan. 2004
Dwg. No.: SDS - 03



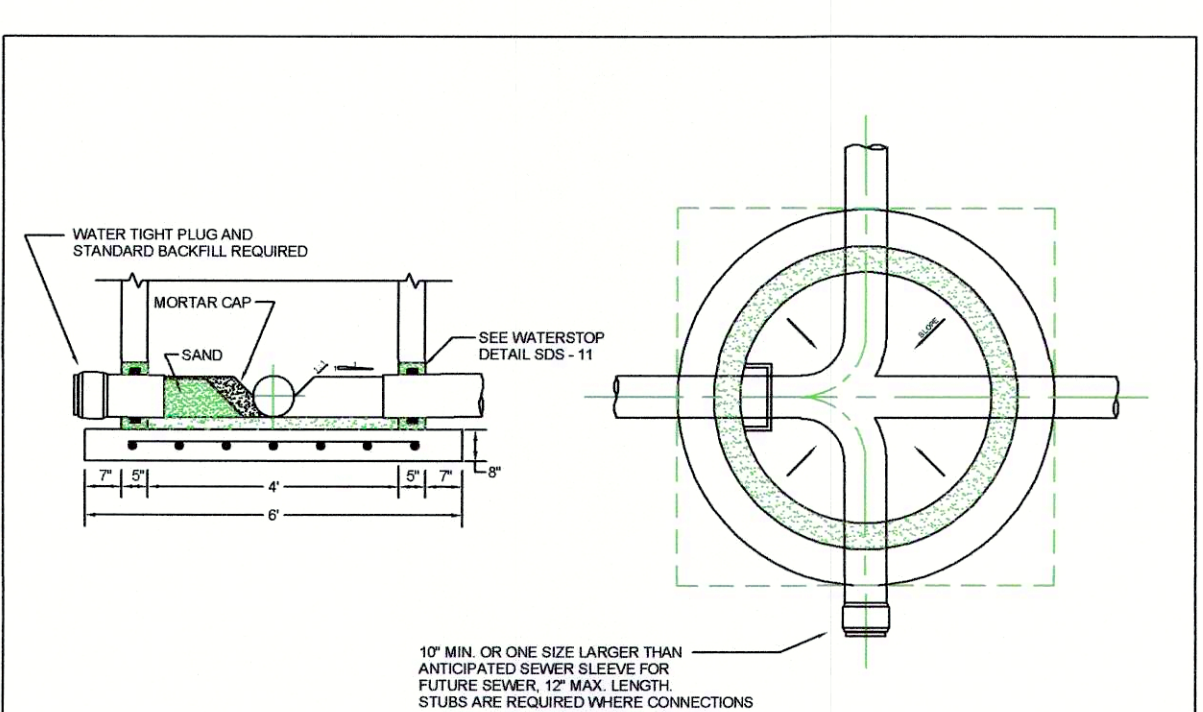
Standard Precast Manhole
Scale: 1" = 24"
Date: Jan. 2004
Dwg. No.: SDS - 04



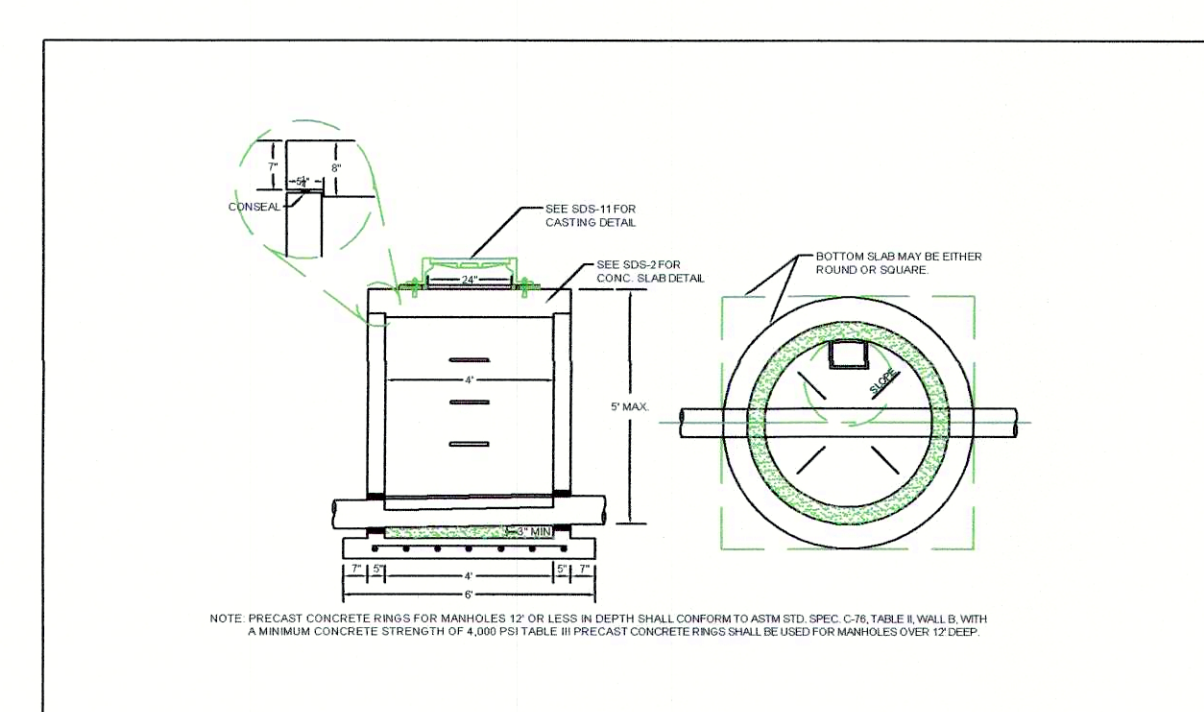
Standard Precast Outside Drop MH
Scale: 1" = 36"
Date: Jan. 2004
Dwg. No.: SDS - 05



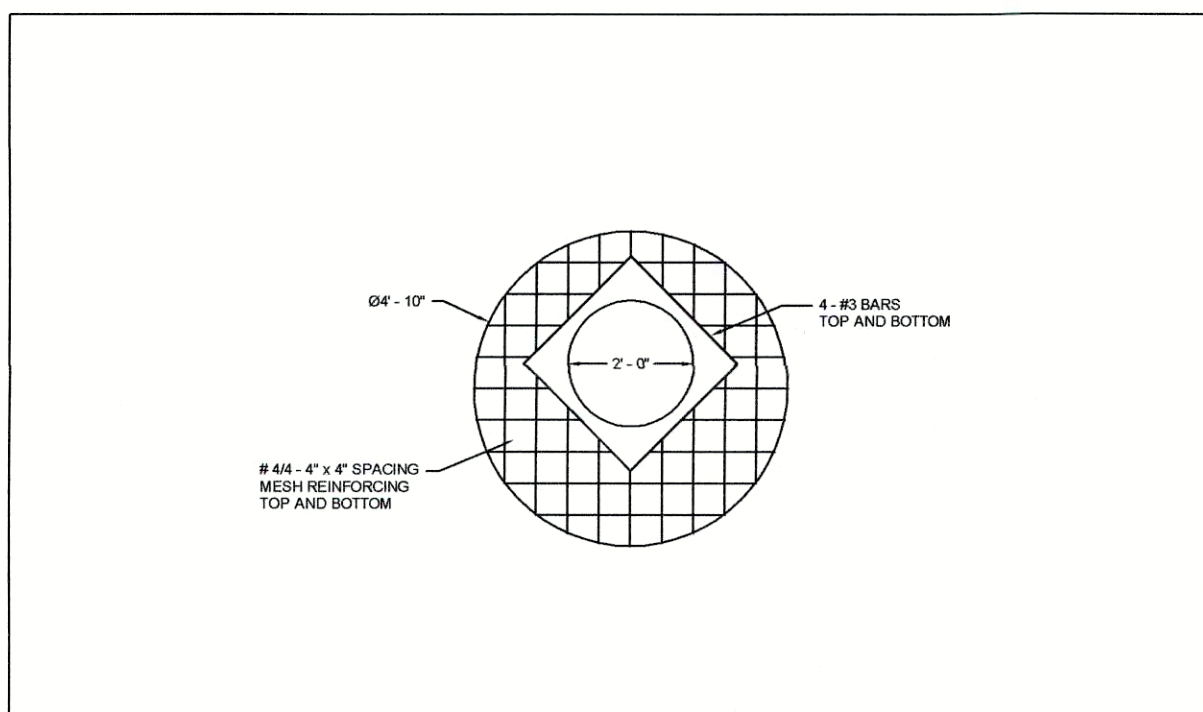
Standard Precast Inside Drop MH
Scale: 1" = 24"
Date: Apr. 2021
Dwg. No.: SDS - 06



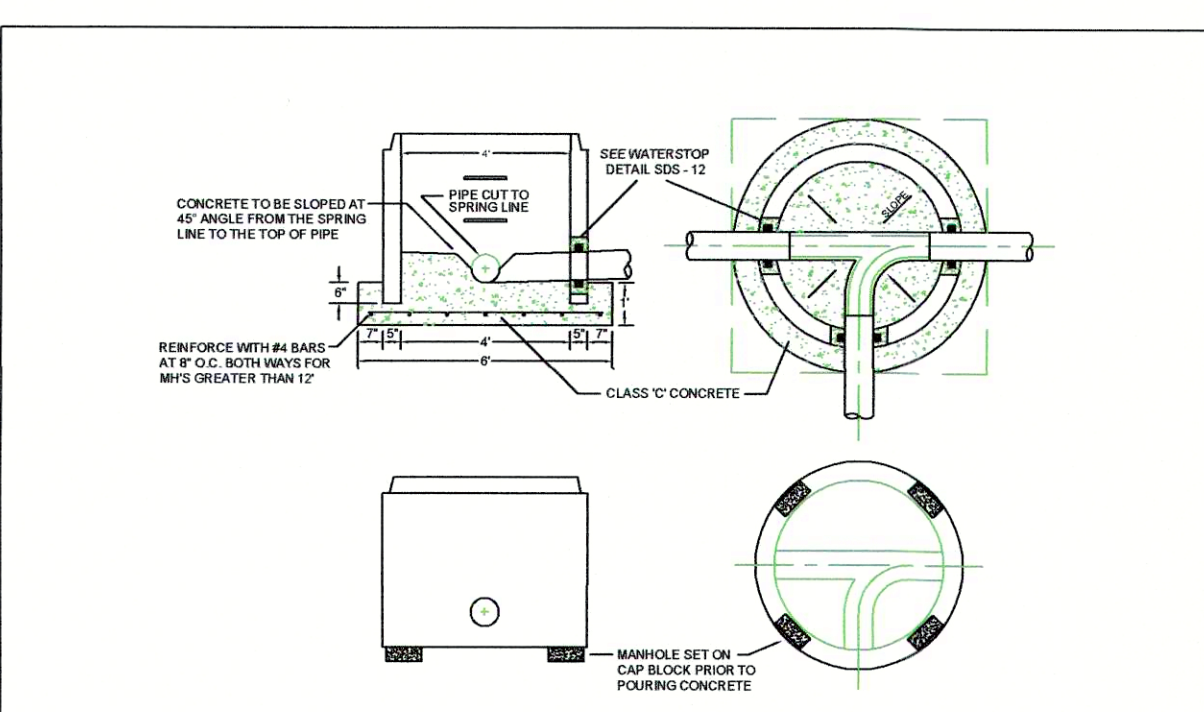
Standard Junction Manhole
Scale: 1" = 24"
Date: Jan. 2004
Dwg. No.: SDS - 07



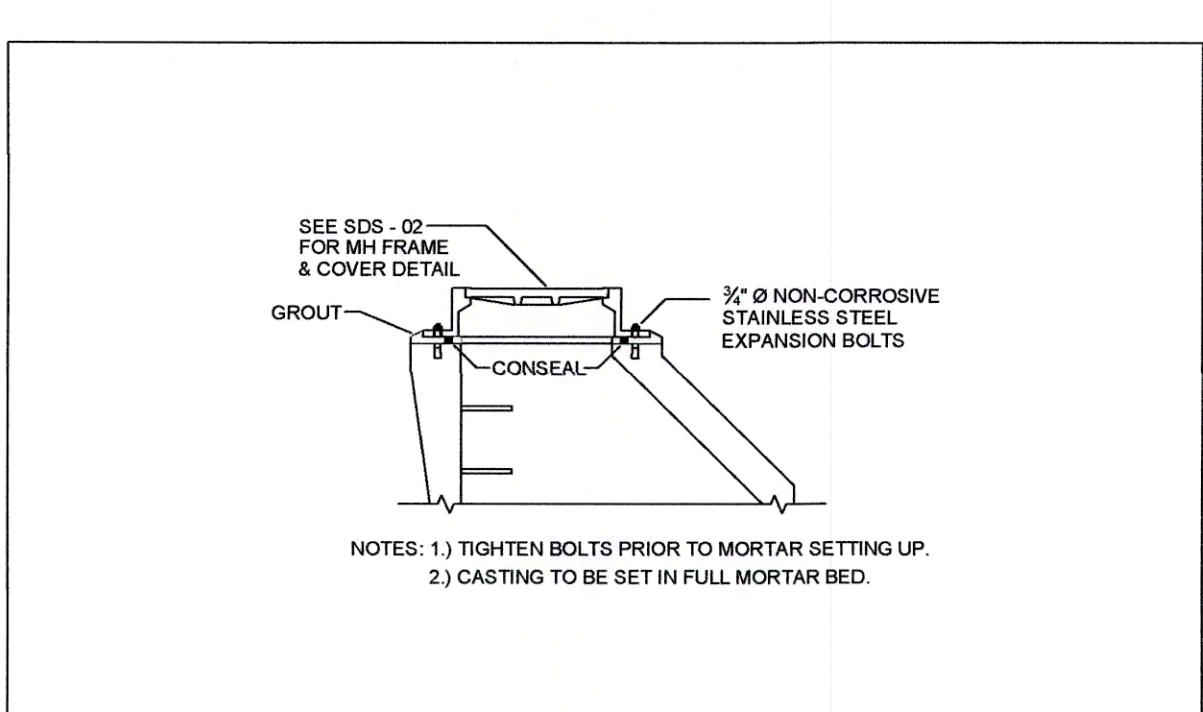
Standard Shallow Precast Manhole
Scale: 1" = 36"
Date: Jan. 2004
Dwg. No.: SDS - 08



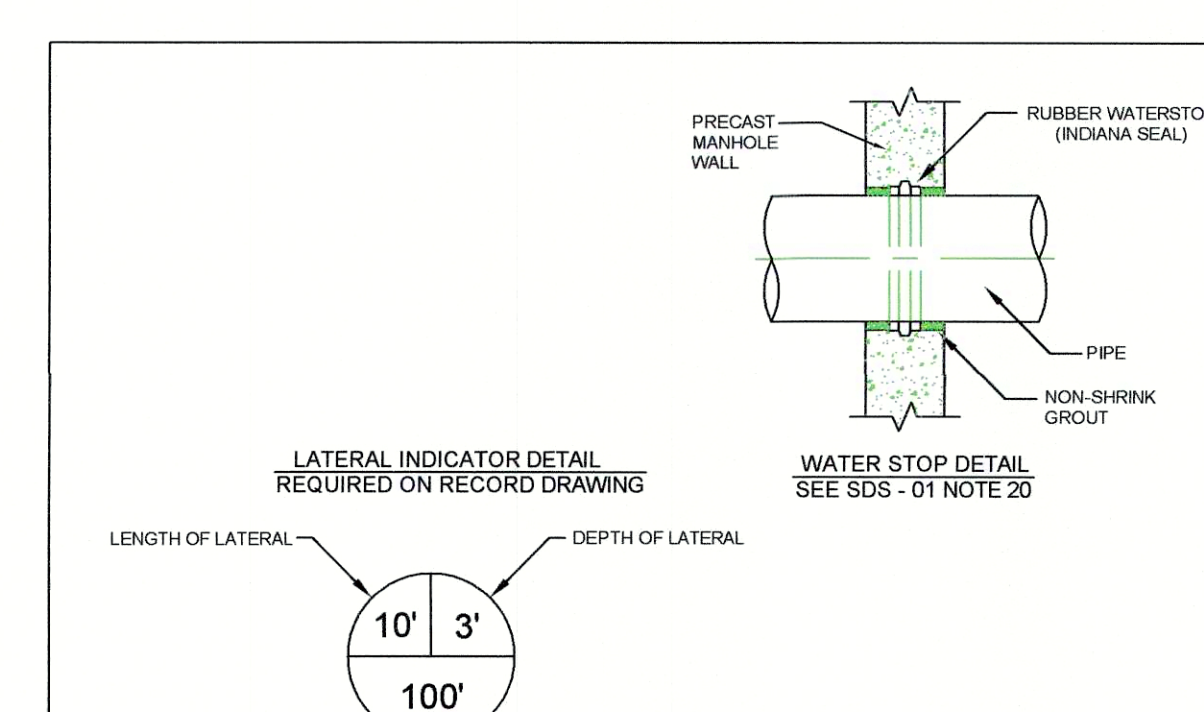
Concrete Top Slab for Shallow MH
Scale: 1" = 24"
Date: Jan. 2004
Dwg. No.: SDS - 09



Standard Set Over Manhole
Scale: 1" = 36"
Date: Jan. 2004
Dwg. No.: SDS - 10



Expansion Bolt & Grout Detail
Scale: 1" = 24"
Date: Jan. 2004
Dwg. No.: SDS - 11



Water Stop and Lateral Indicator
Scale: 1" = 6"
Date: Jan. 2004
Dwg. No.: SDS - 12