

PLOTTED
JUL.. 2022 BY RLL

Scale: 1" = XX Date: MM/YYYY
Drawn By: XXX Checked By: XXX
Proj. Name: XXX Proj. No.: XXX

SHEET
1 OF 3

- 24 HOUR NOTICE IS REQUIRED PRIOR TO STARTING CONSTRUCTION.
- A MINIMUM SEPARATION OF 24" OR A CASING PIPE IS REQUIRED AT ANY LOCATION WHERE A WATER LINE CROSSES A SANITARY OR STORM SEWER LINE.
- WATERSEWER LINE TRENCHES IN EXISTING DRIVEWAYS OR STREETS SHALL BE BACKFILLED WITH #5 CRUSHED STONE TO THE TOP OF THE TRENCH.
- 2" PVC ENCASEMENT PIPE FOR WATER SERVICES CROSSING THE ROAD MUST BE SCHEDULE 80 OR CLASS 180 GASKET WATER PIPE. 3" PVC ENCASEMENT PIPE IS REQUIRED FOR LENGTHS GREATER THAN 50'. DETECTABLE MYLAR TAPE IS REQUIRED.
- WATER LINE TRENCHES OUTSIDE EXISTING DRIVEWAYS OR STREETS SHALL BE BEDDED 6" BELOW AND 1" ABOVE THE PIPE WITH GOOD EARTH FREE OF ROCK. THE REMAINDER OF THE TRENCH SHALL BE GOOD EARTH FREE OF ROCK NO LARGER THAN 1 SQUARE FOOT.
- ALL FITTINGS REQUIRING THRUST BLOCKS SHALL BE FORMED WITH PLYWOOD OR PARTICLE BOARD TO ALLOW ACCESS FOR REMOVAL OF BOLTS AND WRAPPED IN HEAVY PLASTIC (4 MILS MIN.) PRIOR TO PLACEMENT OF CONCRETE.
- THRUST BLOCKS SHALL BEAR AGAINST UNDISTURBED EARTH.
- WATER LINE PIPE MUST BE DUCTILE IRON (CLASS 51) OR C-800 / C-905 (DR18 OR DR14). ALL FITTINGS MUST BE DUCTILE IRON OR CAST IRON FITTINGS.
- VALVE BOXES SHALL BE TWO PIECE SUP TYPE (TYLER 8855 SERIES, MODEL NUMBER 562-A OR EQUAL).
- STEEL ENCASEMENT PIPE SHALL BE PLACED AT THE LOCATION SHOWN ON THE PLANS IN ACCORDANCE WITH THE NOTED SIZE, LENGTH, AND TYPE OF MATERIAL. THE ENCASEMENT PIPE SHALL HAVE A MINIMUM WALL THICKNESS OF 1/4" FOR NEW CASING PIPE OR 3/4" FOR SALVAGED CASING PIPE. FOR EXISTING PIPE INSTALLATION, APPLICATIONS, SPLIT STEEL CASING PIPE SHALL CONFORM TO THE ABOVE SPECIFICATIONS EXCEPT THAT IT SHALL BE IN TWO (2) SEMICIRCULAR SECTIONS JOINED BY A CONTINUOUS WELD FROM ONE END TO THE OTHER WITHOUT ANY TRACEABLE VOIDS. THE ENCASEMENT PIPE MUST BE BITUMINOUS COATED INSIDE AND OUT, AND SEALED ON BOTH ENDS WITH A RUBBER FERNCO END SEAL.
- DUCTILE IRON RETAINER GLANDS ARE REQUIRED ON ALL MECHANICAL JOINT FITTINGS. (NO EXCEPTIONS)

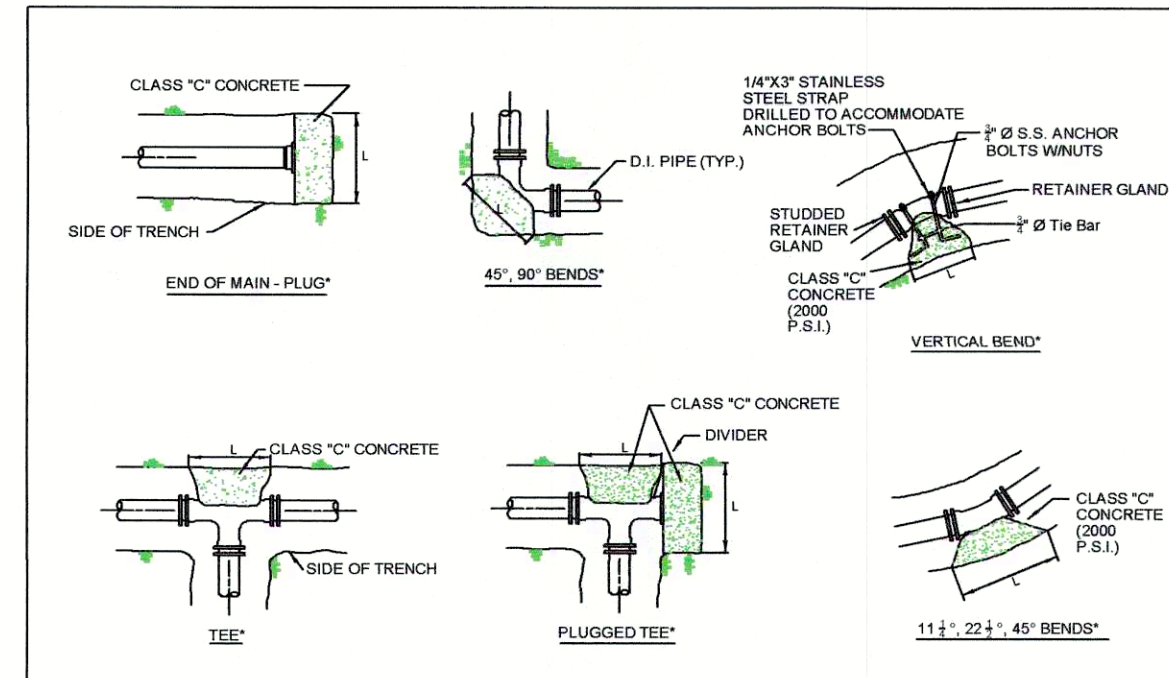


General Notes (Water)
Scale: 1" = 18" Date: JUL. 2022 Dwg. No.: SDW - 01

THRUST BLOCK SCHEDULE MINIMUM REQUIREMENTS FOR ANCHORS												
PIPE SIZE	90° BEND			45° BEND			22 1/2° BENDS			11 1/4° BENDS		
	D	W	L	D	W	L	D	W	L	D	W	L
2"	6"	10"	4"	4"	7"	3"	4"	7"	3"	4"	10"	4"
3"	6"	10"	8"	4"	8"	6"	4"	8"	3"	4"	8"	6"
4"	6"	11"	9"	6"	11"	7"	4"	9"	5"	4"	9"	8"
6"	8"	1-3"	1-1"	6"	1-1"	12"	4"	11"	8"	4"	1-3"	10"
8"	10"	1-5"	1-7"	8"	1-5"	15"	6"	1-3"	10"	4"	1-1"	6"
10"	10"	1-11"	2-5"	8"	1-8"	1-10"	6"	1-5"	1-1"	6"	1-5"	7"
12"	12"	2-3"	2-7"	10"	2-0"	2-3"	10"	1-11"	1-2"	6"	1-7"	9"
14"	1-2"	2-7"	3-2"	1-1"	2-5"	2-7"	12"	2-3"	1-5"	6"	1-8"	12"
16"	1-3"	2-10"	3-6"	1-3"	2-9"	3-0"	1-2"	2-7"	1-7"	8"	2-1"	1-11"
18"	1-9"	3-6"	3-9"	1-6"	3-2"	3-3"	1-5"	3-0"	1-9"	10"	2-5"	1-2"
20"	1-10"	3-9"	4-5"	1-9"	3-7"	3-6"	1-6"	3-3"	2-9"	10"	2-7"	1-4"



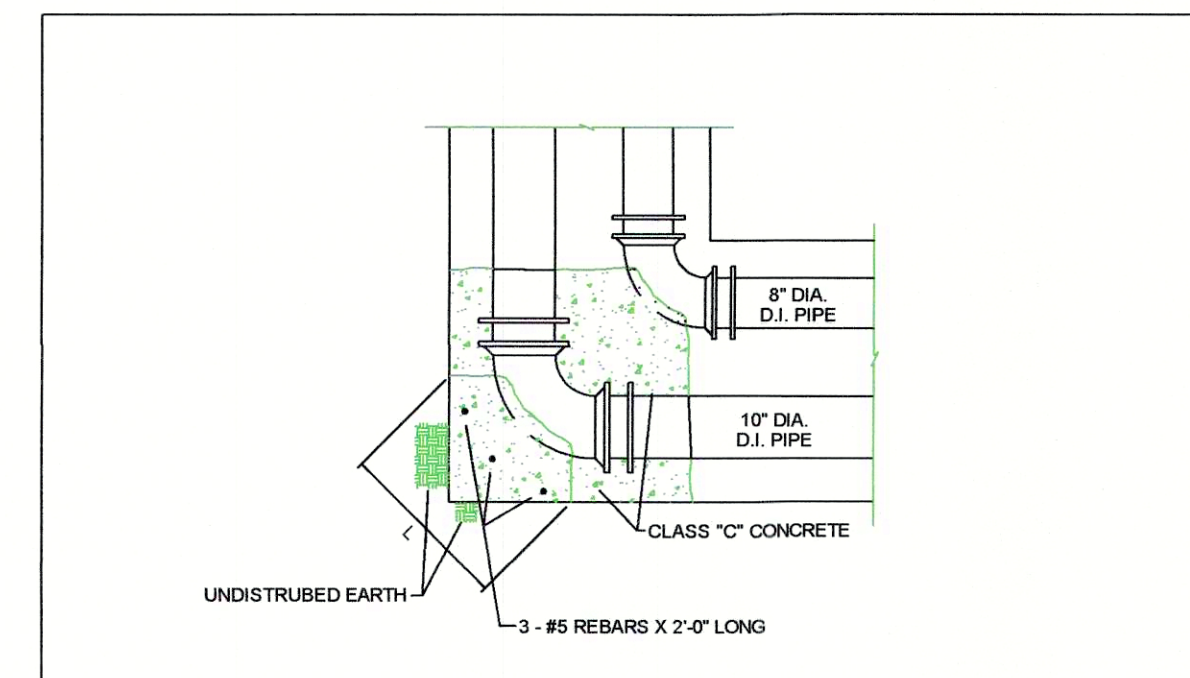
Thrust Block Schedule
Scale: 1" = 10" Date: Jan. 2004 Dwg. No.: SDW - 02



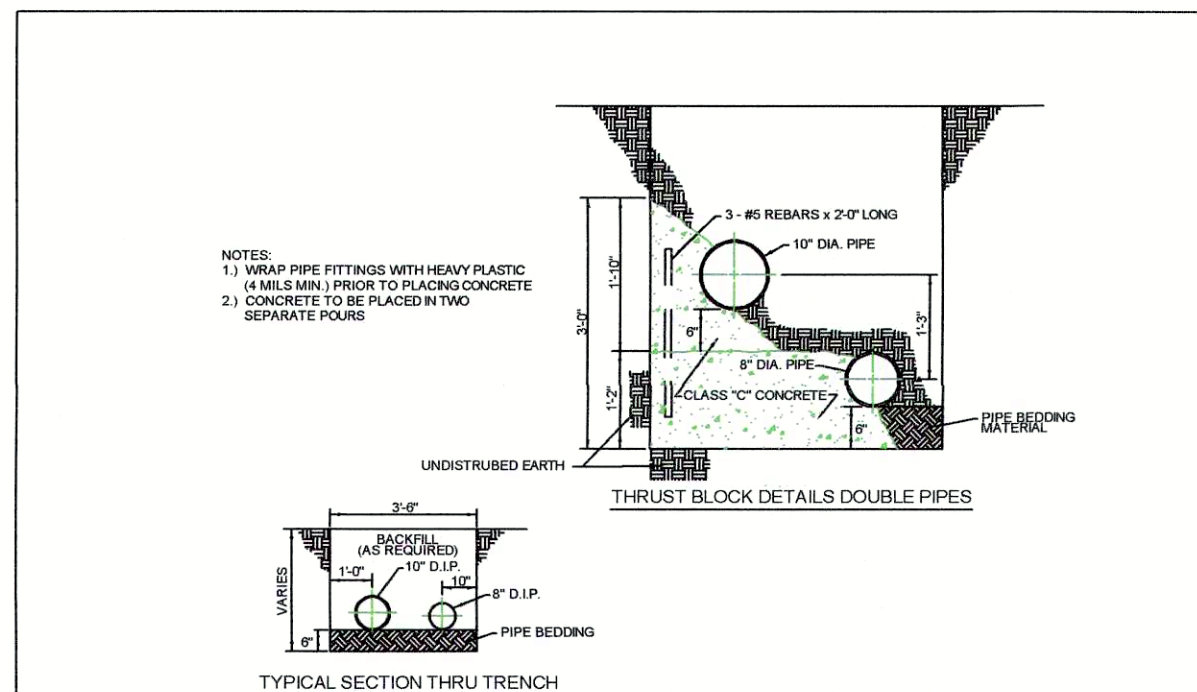
*(SEE NOTE 6 & 7, SDW - 01)



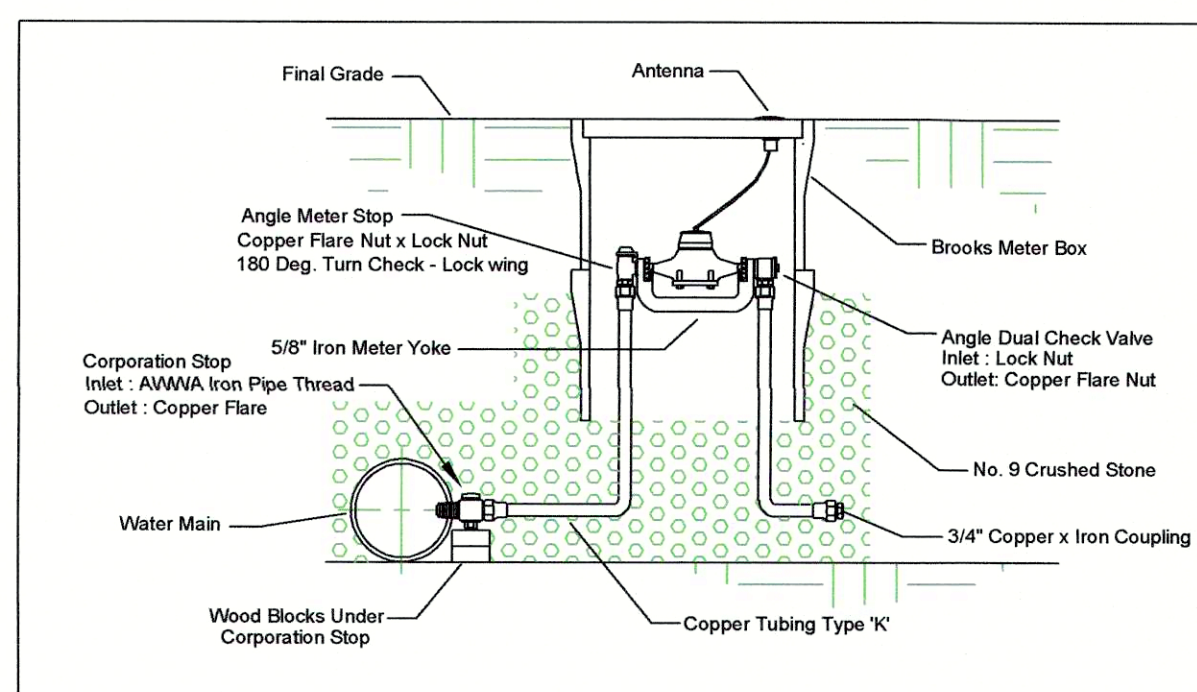
Thrust Block Detail
Scale: 1" = 36" Date: Jan. 2004 Dwg. No.: SDW - 03



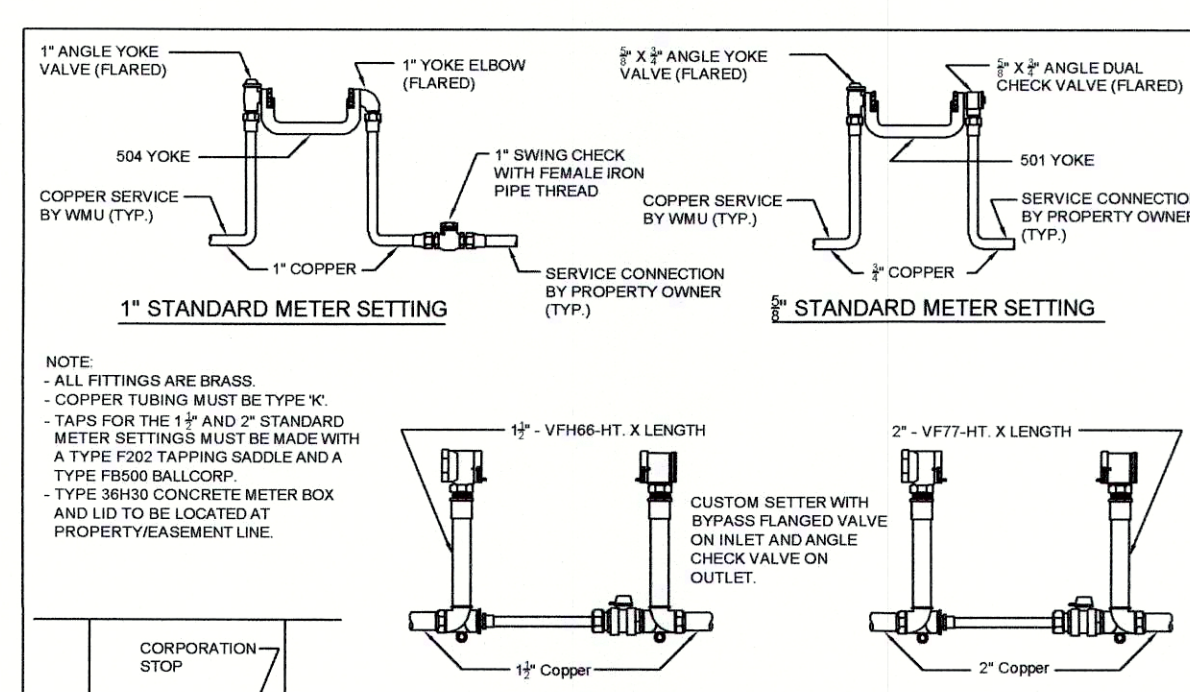
Thrust Block Detail (Double Pipes)
Scale: 1" = 12" Date: Jan. 2004 Dwg. No.: SDW - 04



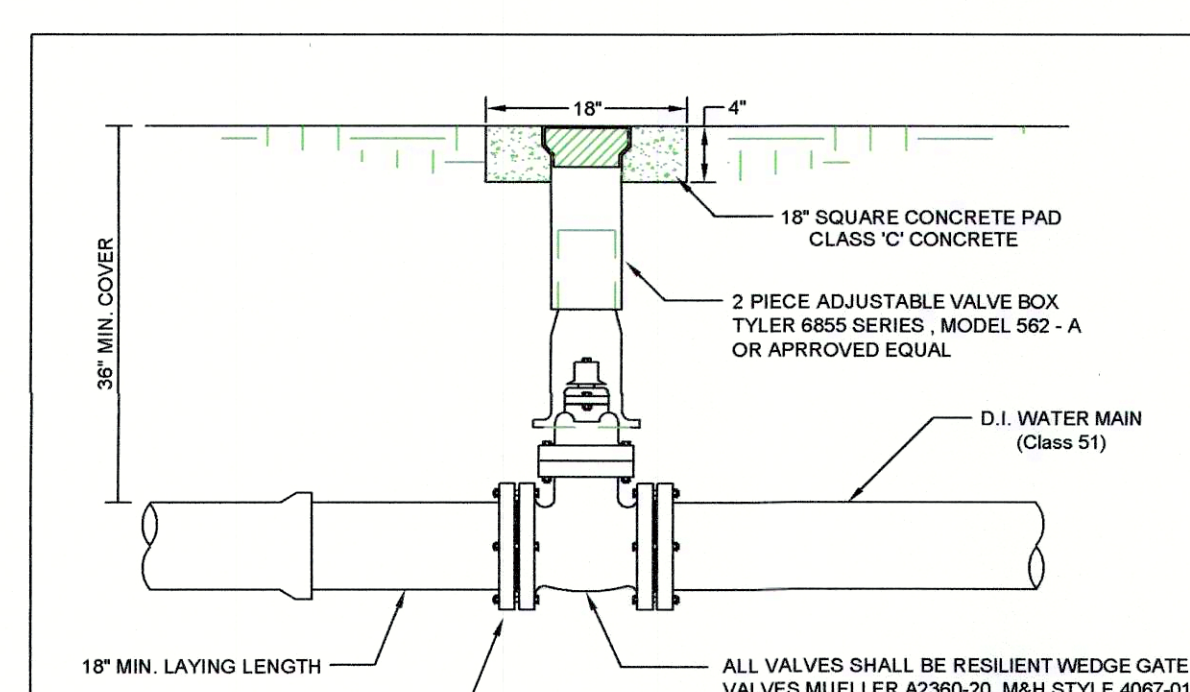
Thrust Block Detail Section
(Double Pipes)
Scale: 1" = 18" Date: Jan. 2004 Dwg. No.: SDW - 05



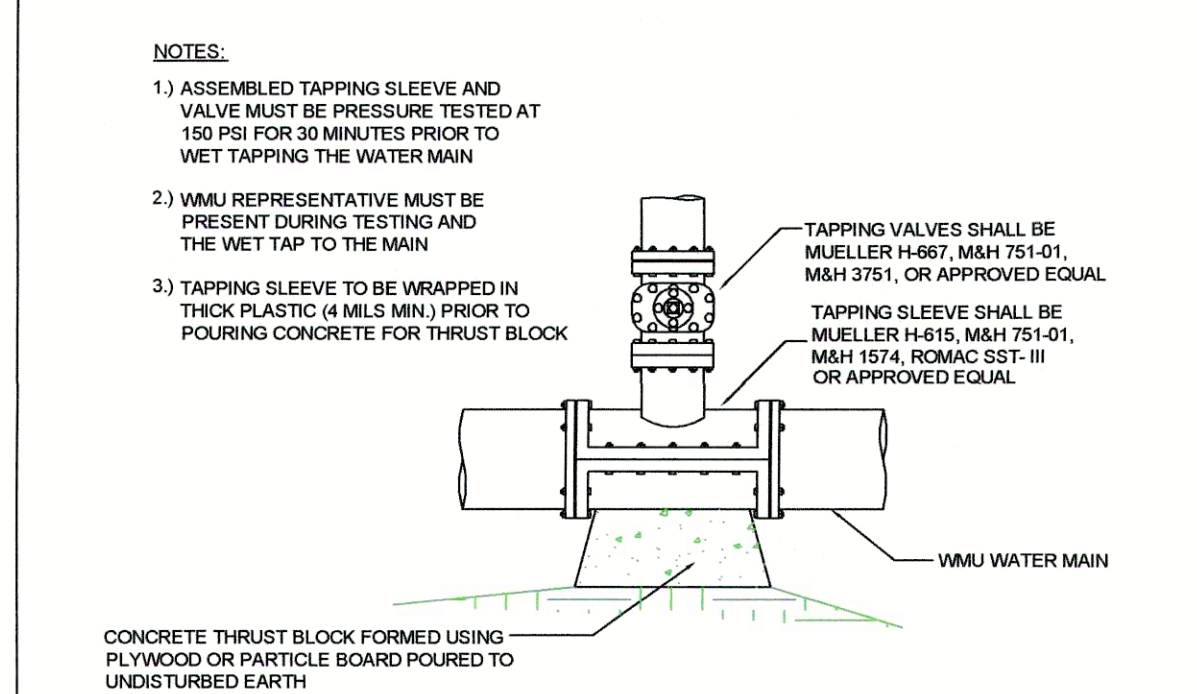
Typical Meter Setting
Scale: 1" = 8" Date: Sep. 2020 Dwg. No.: SDW - 06



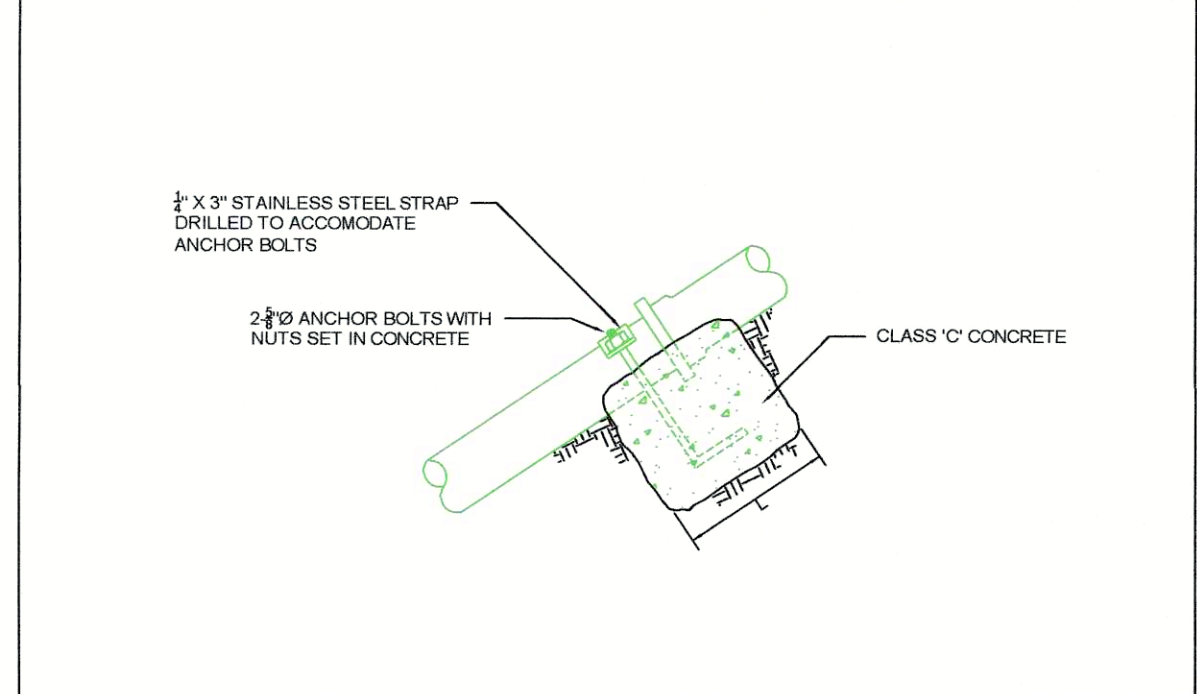
Water Service Connections
Scale: 1" = 12" Date: Jan. 2004 Dwg. No.: SDW - 07



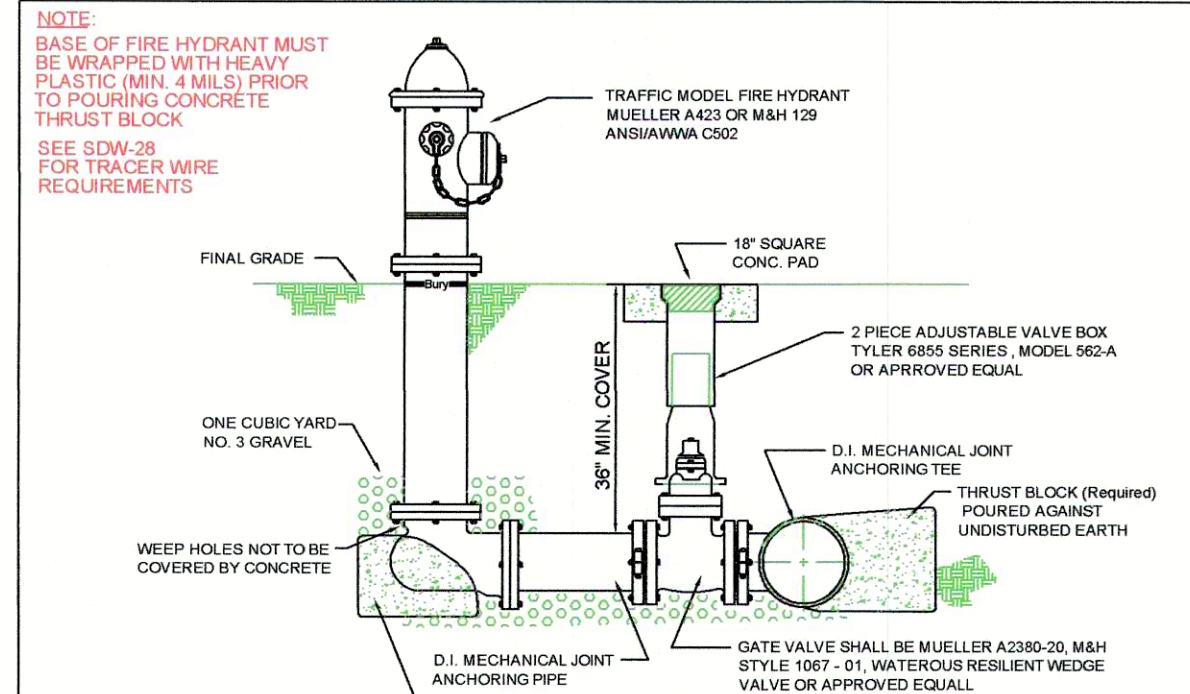
Typical Gate Valve Setting
Scale: 1" = 12" Date: Sep. 2020 Dwg. No.: SDW - 08



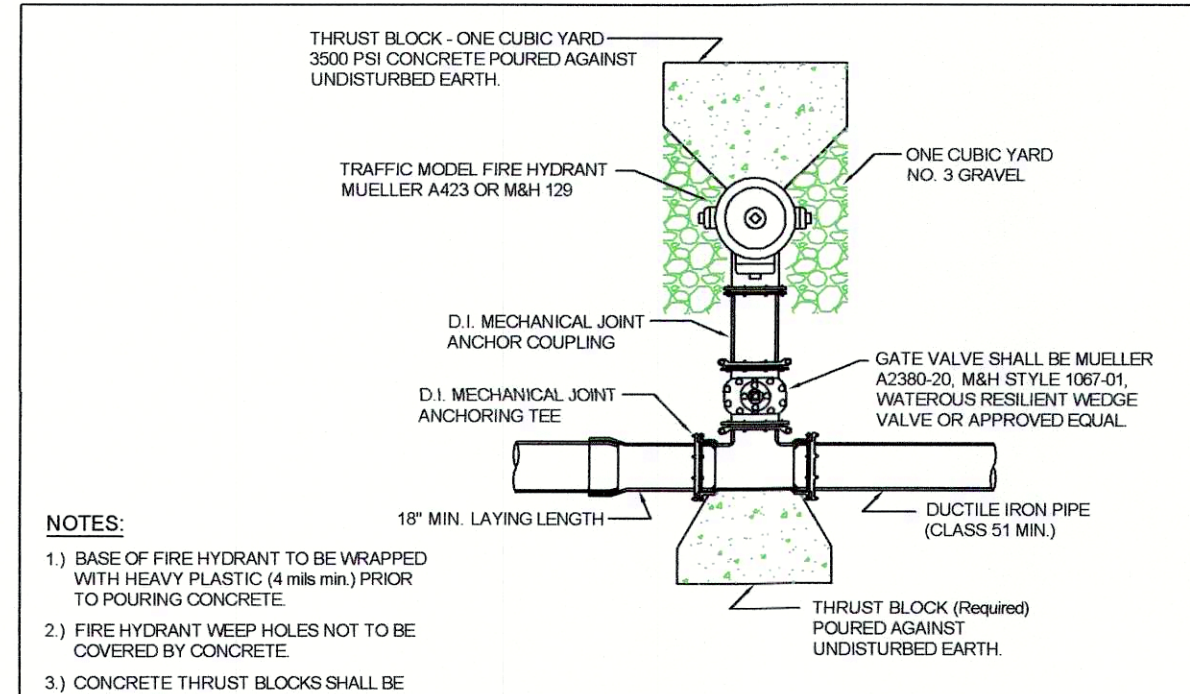
Typical Tapping Sleeve and Valve
Scale: 1" = 12" Date: Sep. 2020 Dwg. No.: SDW - 09



Straight Pipe Anchor
Scale: 1" = 12" Date: Jan. 2004 Dwg. No.: SDW - 10



Typical Fire Hydrant Assembly
Scale: 1" = 18" Date: JUL 2022 Dwg. No.: SDW - 11



Fire Hydrant and Anchor Tee
Scale: 1" = 18" Date: Jan. 2004 Dwg. No.: SDW - 12